

Open data and Products of Analytics Data – Assistance to Surveyors or New Types of Work? Ideas and opportunities

Jolanta Česnauskienė

Chief Data Analyst, Opening Data Division, Center of Registers

Jolanta.Cesnauskiene@registrucentras.lt



Center of registers data and statistics

Objective of ability to use open source data – securing innovation and effectiveness, also providing political, economical and social benefits by creating second use of public sectors data, which would rise up clarity, responsibility and trust in government officials.

By that allowing country's economics to grow in national and international level.

Center of registers data and statistics

National company Center of registers data is being open for public use by CR open data to publicity rules, confirmed by Head of a company in 2018 14 of April by the order No.v-87.

If you have any questions in mentioned rules please contact us by email : atviriduomenys@registrucentras.lt

In this section these data sets will be open to publicity:

DATA OF REAL ESTATE

Registered real estate objects

Real estate deals by Lithuania and baltic countries

Real estate registers statistics

Open source data

LEGAL ENTITYS

REGISTERED DATA

Number of LE in municipalities

Number of fresh registrated LE by municipalities

Number of LE being removed from
municipalities list

LEGAL ENTITYS

REGISTRATED DATA

Number of LE listed by law forms

Number of LE listed by law status

Number of LE listed by authorised capital

Exact sice of authorised capital LE owns

DATA OF CITIZENS REGISTER

Number of citizens in counties

Most popular names of new borns

DATA OF HYPOTEC REGISTER

Registered deals in hypotec (property being traded in)

Registered deals values in hypotec (property being traded in)

DATA OF HYPOTEC REGISTER

Messages and changes

Registered deals in hypotec and property being traded in by their types

Deregistrated deals in hypotec (property being traded in)

E. HEALTH DATA

Medical views

Electronical documents

WHAT IS OPEN DATA?

Open data – data open to public about institution, its work and information or part of it, registered by the institution, no matter of its form or how information is shown, including data of register and data applied to center of registers, also copies of those documents, as well as national information systems specifications, which can be used and be shared by any person, and used in any objective as long as had source link (LR

Transport Minister 2016 07 20 order No. 3-245(1,5E)

public secretary data opening recommendations.

OPEN DATA USERS CAN USE INFORMATION, ACORDING THE LAW

Informacion taken form Center of registers can not be manipulated or it can not be used to advertise products or services, or be shown incorret to trick or decive third persons.

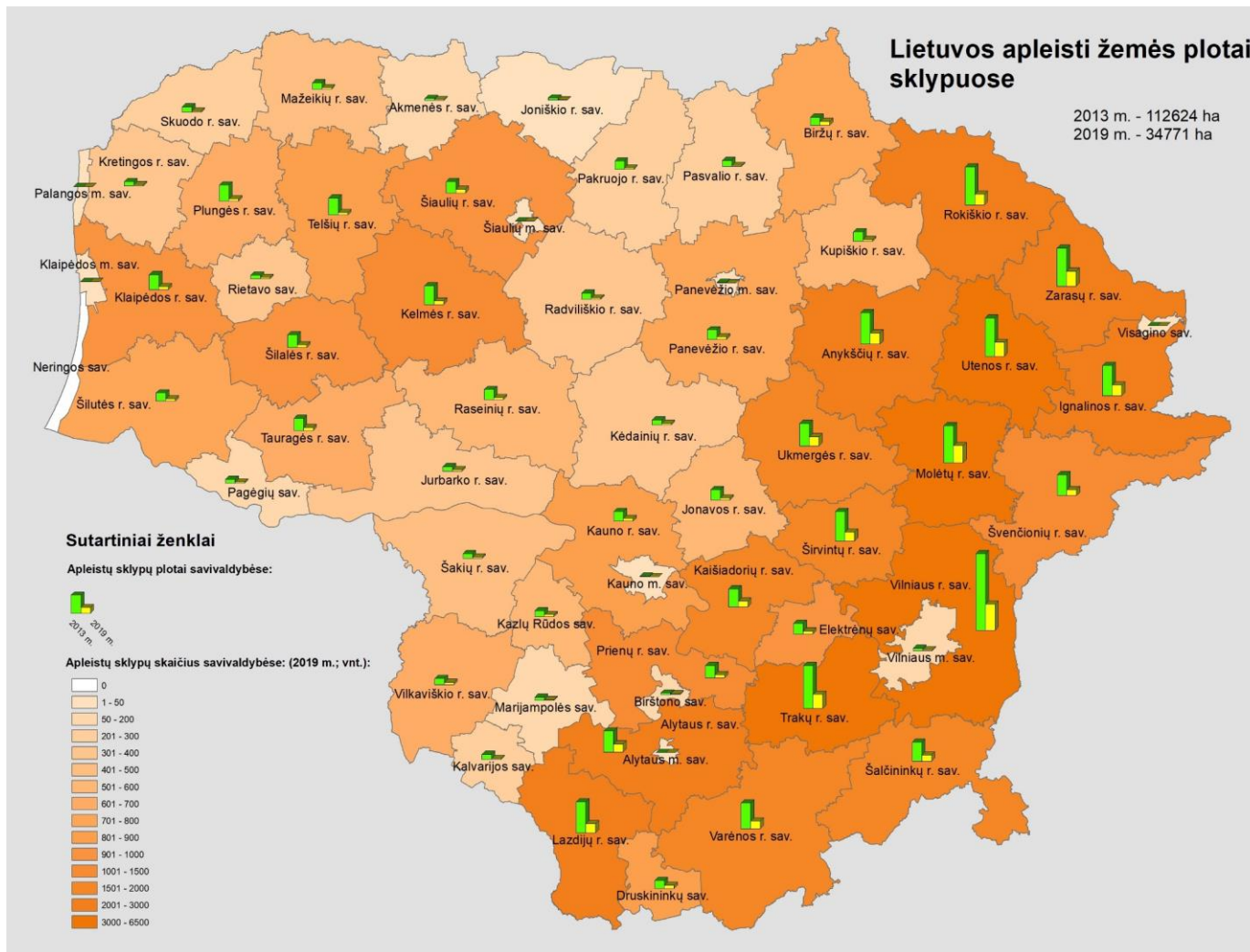
Open data user has to show a link where is informacion taken from, its scourse, date and time, when informacion was recived, also reensuring that no civil rights or intrests will be offended

EXAMPLES OF OPEN DATA

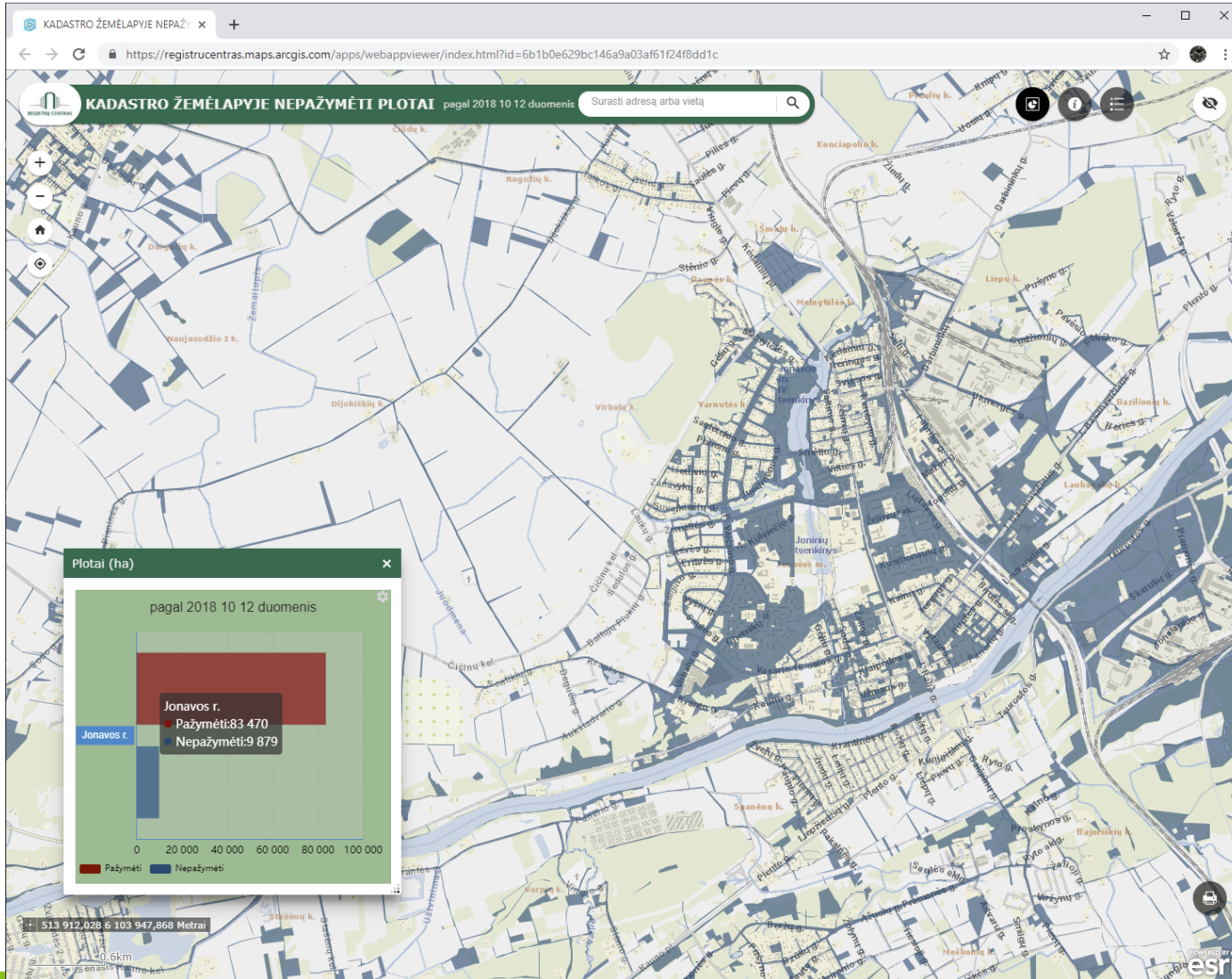
<https://regia.lt/>

<https://www.geoportal.lt/geoportal/>

EXAMPLES OF OPEN DATA



EXAMPLES OF OPEN DATA



WHAT IS OPEN DATA?

Thank you for your attention!

www.registrucentras.lt