

# Digital Processes in National Land Survey of Finland

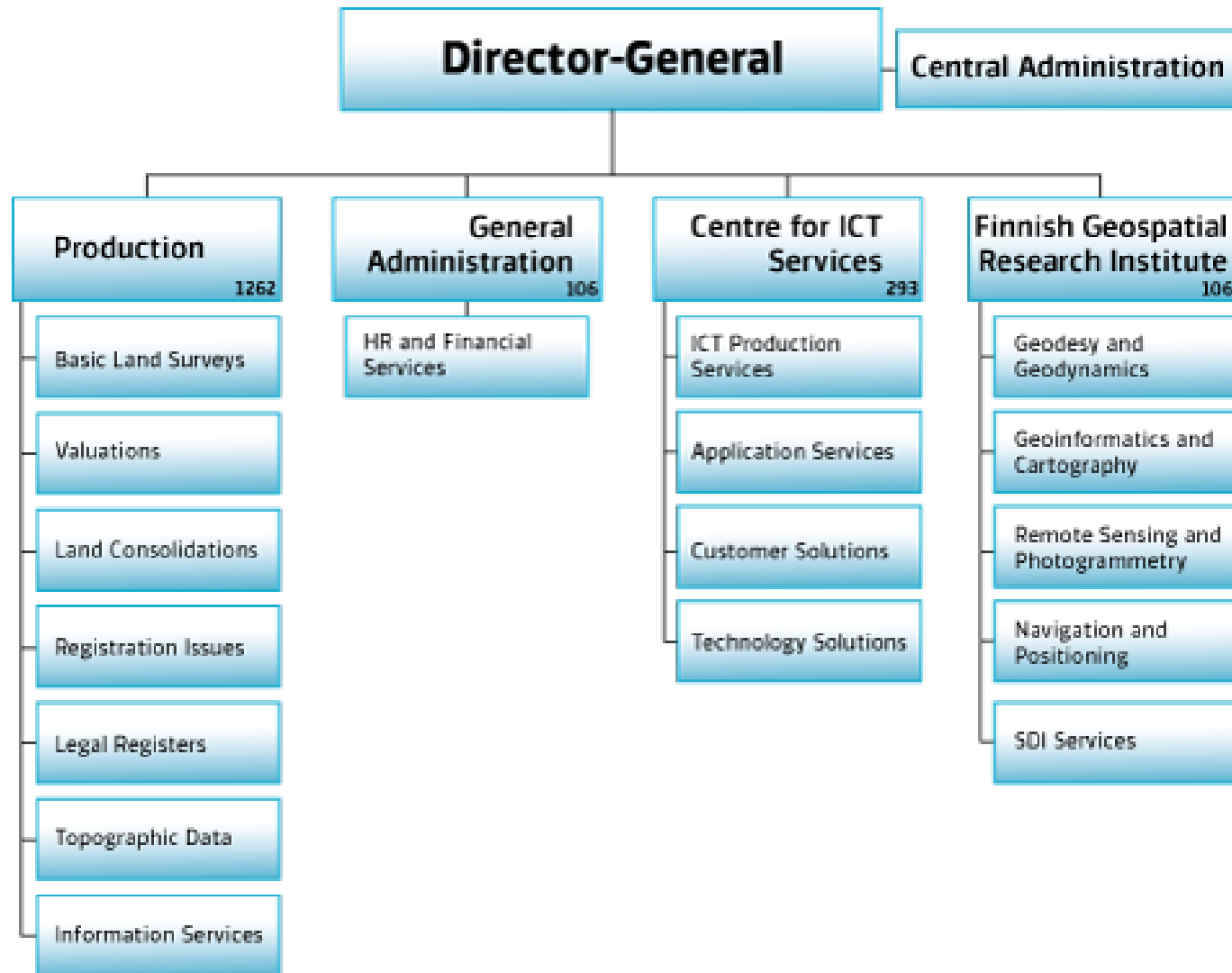
Martti Pietikäinen

22.9.2016

CLGE Seminar, Riga



# National Land Survey of Finland 1.1.2016



# Strategic key projects

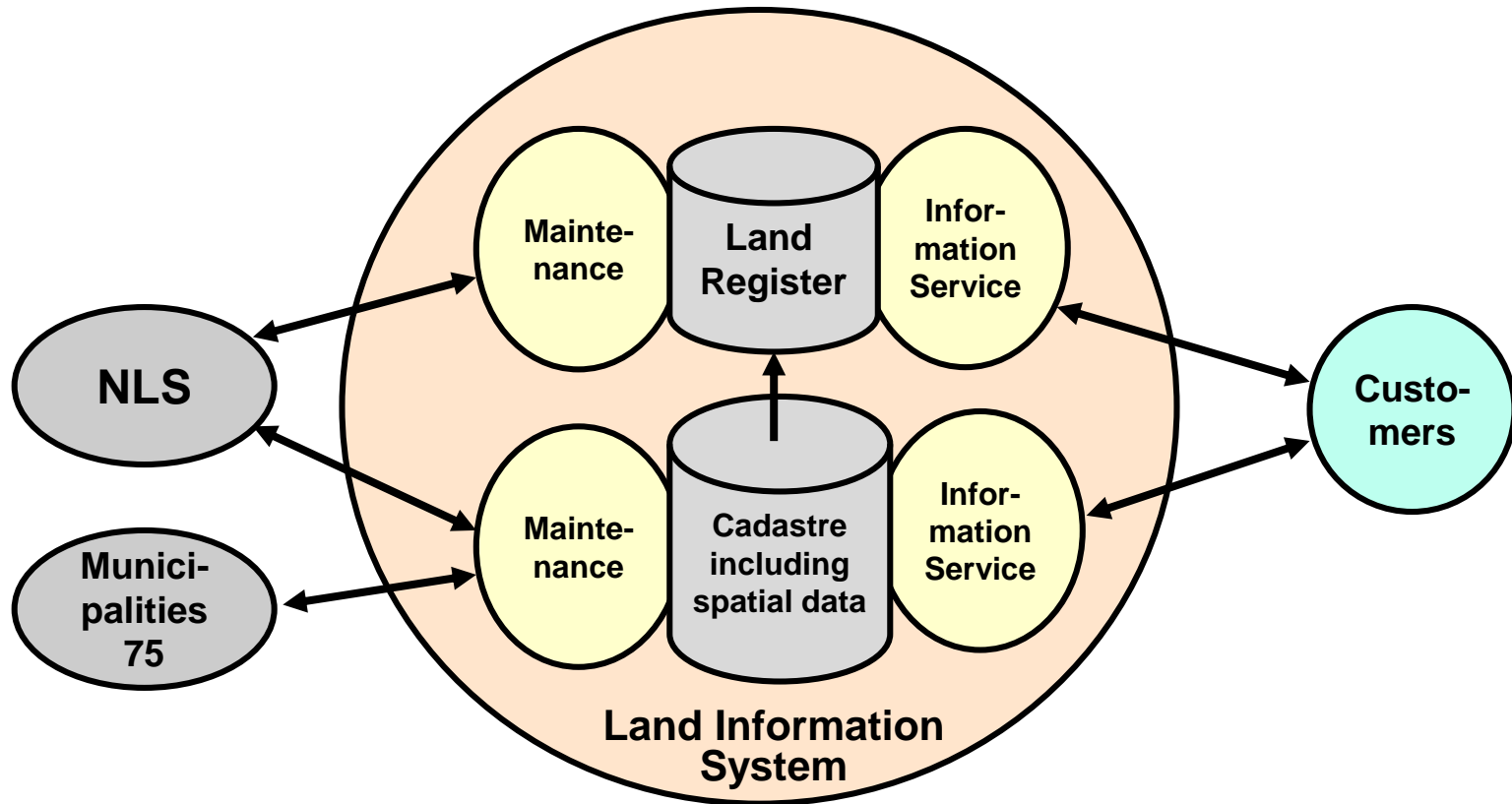
- eServices
  - Bidirectional eServices project 2SASI
  - Increasing the use of the Property Transaction Service
- Effective use of spatial data
- A new cadastral system
  - Including the research project Katasteri2035, 3D projects, research into coordinate based cadastre.
- Computerised register of limited liability housing companies (ASREK)

# National Land Survey of Finland

## Cadaster and Property Transactions



# The Land Information System



Totally digitized processes in cadastre maintenance and information services

# Electronic Property Transaction System in Finland

In brief

- Web-based application which enables electronic transactions related to real estate conveyance
- One ICT-service which includes both real estate transaction and mortgage management systems
- Service was launched in November 2013
- Service provided by National Land Survey of Finland

# Electronic Property Transaction System in Finland

## Barriers to implementation

- Use is not required in legislation
  - "Paper process" can still be used (attesting notaries & applications of mortgages)
- Real estate brokers are still required to archive paper forms
- Loan related papers are stored in vaults
- ~ 3.5 million paper mortgage deeds

## Next developments

- Agreements with banks have been made to boost the use
- Applications of mortgages allowed only digitally in 2017

# National Land Survey of Finland

## Two-way Services





# NLS current customer services

**Personal  
"Desk service"**

**Local service points  
Call center**

**Interactive  
"Self service"**

**Property  
Transaction  
Service**

**Information delivery  
"One-way service"**

**Web-pages  
& Social Media**

**NLS Web pages**

**Facebook  
Twitter  
LinkedIn  
YouTube**

**Discovery service:  
GIS metadata  
Catalogue**

**Content services**

**Map interfaces**

**WMS / WMTS / WFS**

**Open data**

**Data by order**

# NLS services 2017

## Personal "Desk service"

Local service points  
Call center

Video contacts

New ticketing  
system

## Interactive "Two-way services"

Interactive web services  
connected to NLS core  
processes

Connection to national  
Service Architecture  
gateway

Extranet for joint  
projects

Property  
Transaction  
Service

## Information delivery "One-way service"

Web-pages  
& Social Media

Content services

INSPIRE services  
Transformation  
Visualisation

# What can you do with the NLS Two-way services ?

LOGO

## Maanmittauslaitoksen palveluportaali

På svenska | Samegiella | In English  
Kirjautunut: Jukka Mallila

Kaikki kiinteistösi

Toimenpidearkisto

Uusi toimenpidepyyntö

Anna valtuutus

Tee kiinteistökauppa

### Kiinteistösi

Nimi	Kunta	Tunnus
Sotioperä	Oulu	643-433-87-8
A Kuutamola	Oulu	645-443-32-8
Mallila <span style="font-size: 0.8em;">↑</span>	Oulu	632-421-43-5
B Ylä-Mannerla	Lahti	798-576-32-5
C Mäkelä	Muhos	494-402-19-41

<< 1 >>

### Vireilläolevat toimenpiteet

- ! Lohkominen, 2014-486340  
*Mäkelä 494-402-19-41, Oulu*
- Vesijättömaan lunastus, 2014-687940  
*Kuutamola 654-43-32-8, Oulu*
- Tilusjärjestely, 2011-897546  
*Sotioperä 643-433-87-8, Oulu*

# What can you do with the NLS Two-way services ?



- Check all the basic information of your own real properties
- Activate cadastral and legal survey operations
- Take part on legal surveys and cadastral operations via web
- See all the current activities going on
- Download free: topomaps, historical maps, aerial & laser scanned data
- Order NLS products like registry certificates, printed maps, ..

# Connection to national Service Architecture Gateway

🏠 > Omat tietoni

## Omat tietoni



### Henkilötietoni

Katso kaikki tiedot

Kumpulainen, Pauliina Johanna  
010180-836B

**Kotikunta:** Vihti  
**Puoliso:** Kumpulainen, Matti Johannes,  
120978-559H  
**Lapsi:** Kumpulainen, Onni Matias,  
310813A55R

Lähde: Väestötietojärjestelmä

### Kiinteistöni

**Kiinteistön tunnus:** 123-456-78-90  
**Kunta:** Vihti  
**Omistusmuoto:** Omistaja  
**Omistusosuus:** 1/2

Lähde: Maanmittauslaitoksen kiinteistörekisteri

### Ajoneuvoni

Olet seuraavan ajoneuvon haltija:

**Ajoneuvo:** HHT-323  
Nissan Micra  
VM, 2006

**Omistaja:** Kumpulainen, Matti Johannes

**Ajoneuvovero**

### Omat tietoni

–sivulla näet kootusti tietojasi hallinnon rekistereissä ja viranomaisten muistutukset ajankäytöistä. Voit myös lisätä näkymään tarjolla olevia yksityisiä palveluita.

### Muistutukset ja viestit

#### Muistutukseni ja viestini

🔔 | 19.11.2014 | Ajoneuvovero eräännytty 3.12.

[Lue lisää](#)

✉️ | 18.10.2014 | Kysymys kothoidontuesta.  
Re: Kysymys kothoidontuesta

[Lue koko viestiketju](#)

🔔 | 11.10.2014 | Muistathan, että seuraavan neuvolakäyntisi ajankohta on 11.11.2014.

[Lue lisää](#)

[Kaikki viestit ja muistutukset](#)

#### Viimeksi käytetyt palvelut

[Nuohous \(Vihti\)](#)  
[Veroilmoitus](#)  
[Neuvolan alanvaraus \(Vihti\)](#)  
[Kothoidontuki](#)

[Näytä kaikki kartalla](#)

Lähde: Aikataustajärjestelmä, oikeusministeriö

# What is Digitalisation?

- “Digitalisation is the use of digital technologies **to change a business model** and provide new revenue and value-producing opportunities; it is the process of moving to a digital business.” - Gartner IT Glossary
- The objective should not be to reduce costs, though it may be the outcome also
- What is the result, what is the service?
- Analyze the transactions of the whole process
- Make it easier, faster and more pleasant to customers, employees and partners

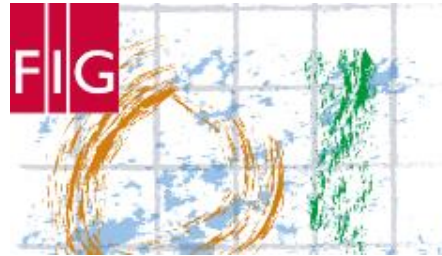
**FIG WORKING WEEK 2017**

Surveying the world of tomorrow –  
From digitalisation to augmented reality

**May 29 - June 2 Helsinki Finland**



# **FIG Working Week 2017 in Helsinki 29.5.-2.6.2017**



Theme:

**Surveying the World of Tomorrow – From  
Digitalisation to Augmented Reality**

**FIG**

# More information

[www.nls.fi](http://www.nls.fi)

